

MM-101



JOHN & JANE (ER ESTATE)
M Stone

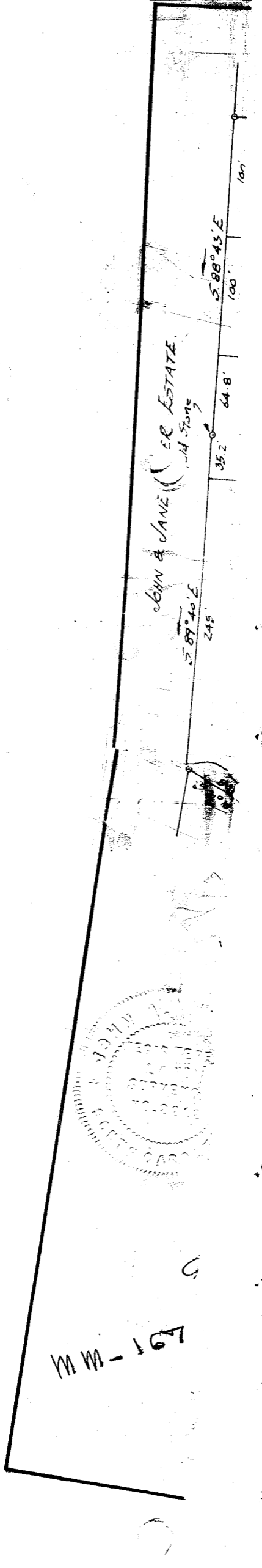
S 89° 40' E
245'

S 88° 43' E
100'

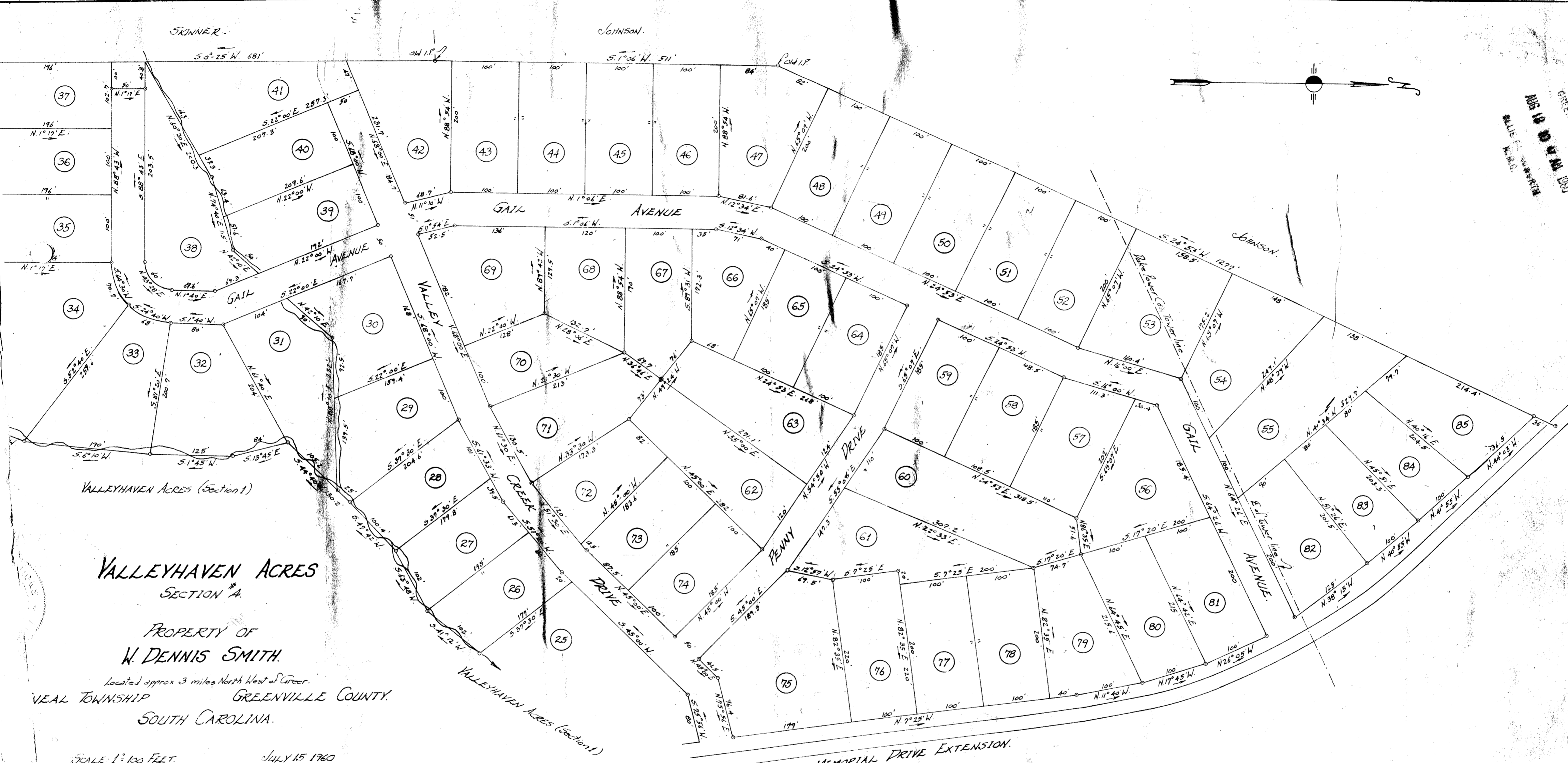
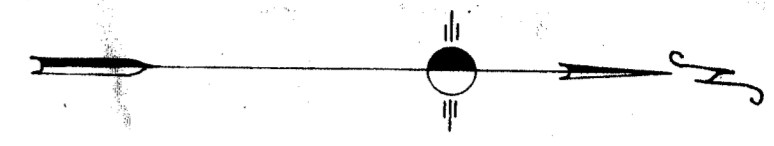
35.2'

64.8'

100'



GREENVILLE
AUG 18 1960
S.C.



VALLEYHAVEN ACRES
SECTION #A.

PROPERTY OF
W. DENNIS SMITH.

Located approx 3 miles North West of Greer.
VEAL TOWNSHIP GREENVILLE COUNTY.
SOUTH CAROLINA.

SCALE: 1" = 100 FEET. JULY 15 1960
subdivision made July 1960.

John A. Simmons, Reg. Surveyor #2212.
GREER, S.C.

AUG 18 1960

4944

← To Greer — MEMORIAL DRIVE EXTENSION.

NOTE: This plat shows amendments to lots 26, 27, & 28
as shown an original plat of Valleyhaven, made by
me July 22 1957.
NOTE: Iron pins at all corners.

4944 Filed This 18 day of Aug 1960
And Recorded in Vol. M.W. Page 167
Register Mosaic Commission (Greenville County, S.C.)